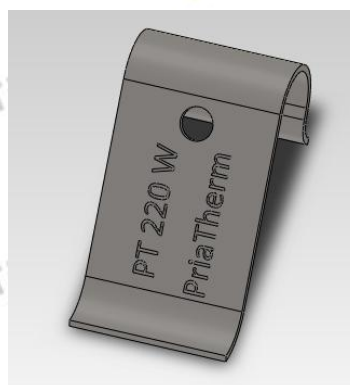


Part Number	Width (mm)	Thickness (mm)	Clamping force by 5 mm deformation (N)	Contact Distance (mm)
PT 247 W+	20	0.5	60 to 81	14.5



Part Number	Width (mm)	Thickness (mm)	Clamping force by 4,5 mm deformation (N)	Contact Distance (mm)
PT 220 W+	12	0.5	35 to 48	15.5



Part Number	Width (mm)	Thickness (mm)	Clamping force by 4,5 mm deformation (N)	Contact Distance (mm)
PT 220 X+	10	0.7	80 to 108	14.5

